

The background features a large, semi-transparent watermark of the Buffalo State University crest. The crest is a shield-shaped emblem with a central figure, a banner at the bottom, and the year '1871' in the center. The banner contains the motto 'DEDICATED TO EXCELLENCE'.

Racial Equity Analyses for Treatment System in Erie County

Al Delmerico, PhD

John Petrocelli, BS

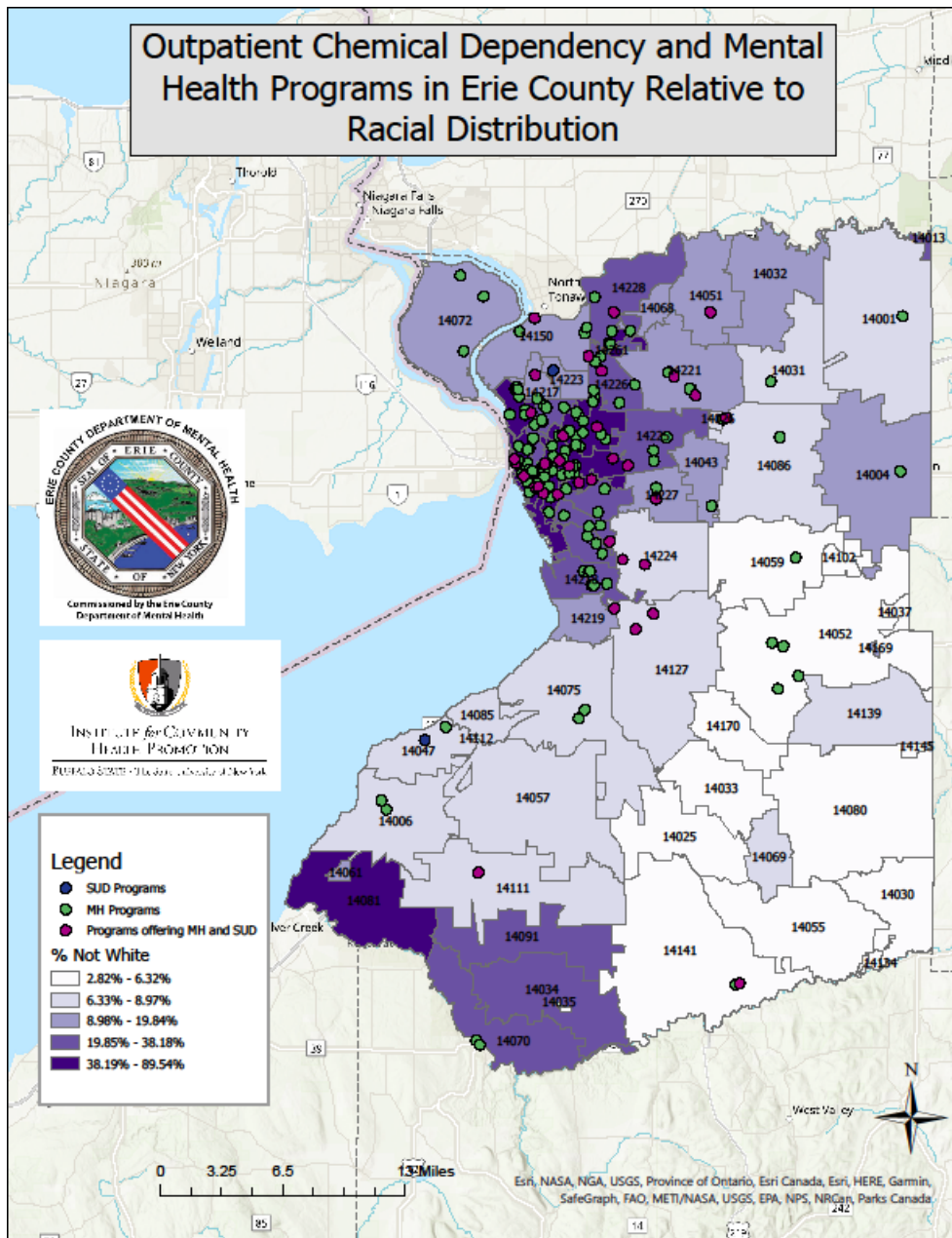
Scott Martin, BS

Institute for Community Health Promotion

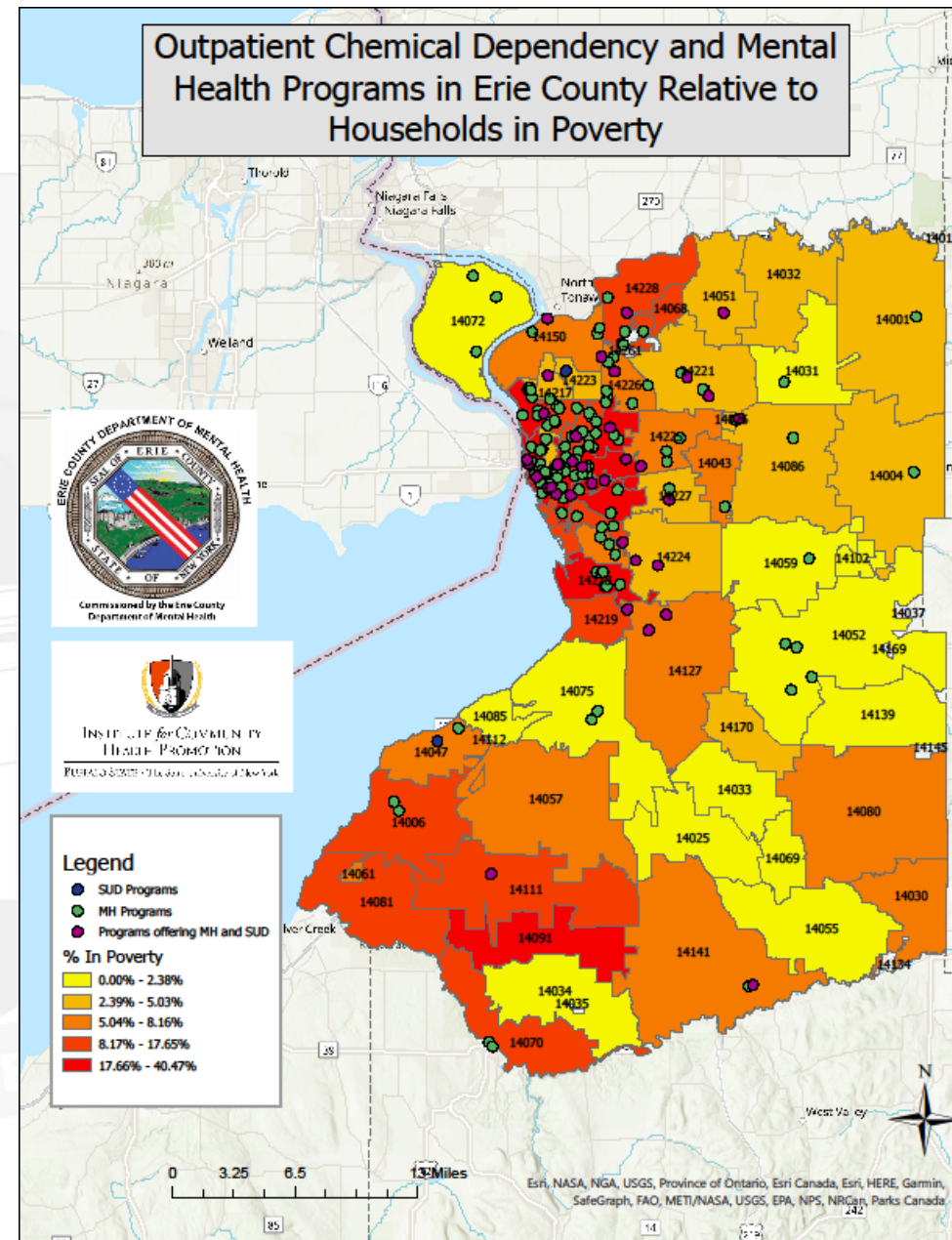
Background

- Assess the distribution of physical treatment locations and their relationship to population characteristics (race and poverty) within their catchment areas
 - Programs and their addresses were validated by providers
 - Locations were geocoded and mapped within a GIS environment
 - Choropleth maps (which use color to visualize differences) of Census data (decennial and ACS) are presented with the locations overlaid on top of these demographic layers
 - Further analyses to assess system coverage and population characteristics in any physical gaps
 - Starting point for discussion of equity of distribution of program locations

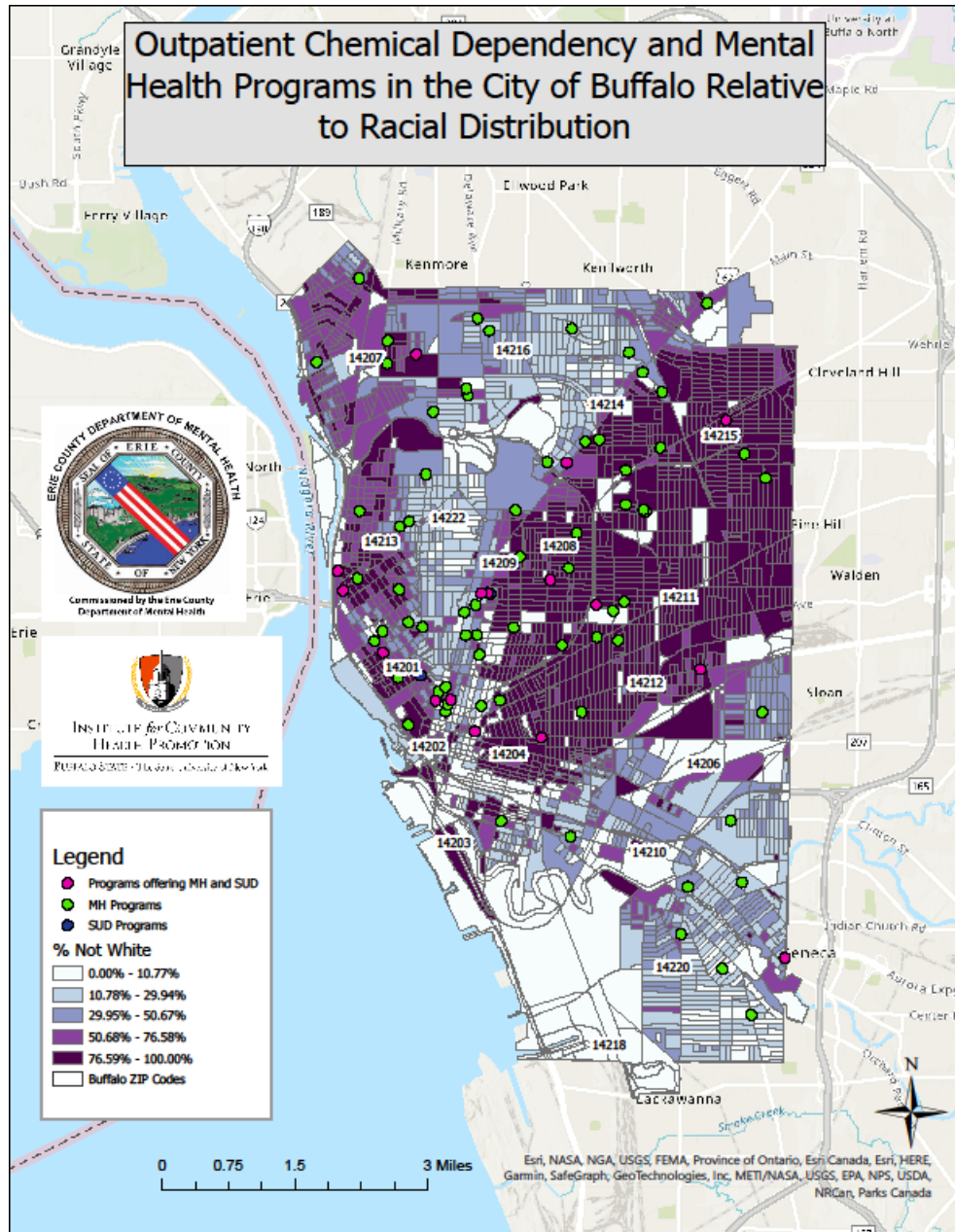
Outpatient Chemical Dependency and Mental Health Programs in Erie County Relative to Racial Distribution



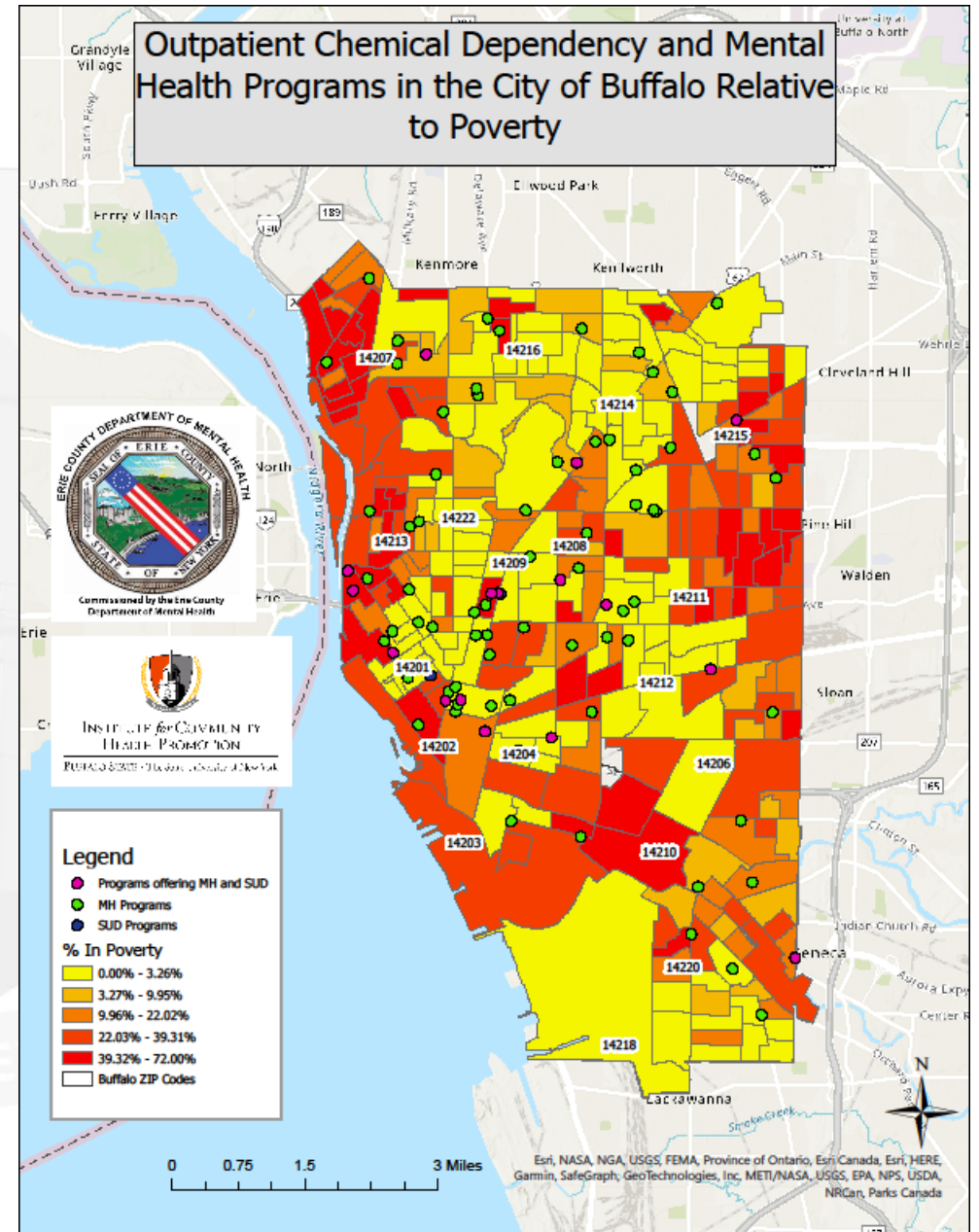
Outpatient Chemical Dependency and Mental Health Programs in Erie County Relative to Households in Poverty



Outpatient Chemical Dependency and Mental Health Programs in the City of Buffalo Relative to Racial Distribution



Outpatient Chemical Dependency and Mental Health Programs in the City of Buffalo Relative to Poverty



	D	E	F	G	H	I	J
1	PROGRAM_CITY	PROGRAM_STATE	PROGRAM_ZIP_CODE	PROGRAM_TYPE	Percent Hispanic	Percent White	Percent Black
2	Amherst	NY	14228-	Outpatient Services	5.16%	66.62%	16.07%
3	Buffalo	NY	14211-2943	Outpatient Services	7.27%	8.28%	64.10%
4	Buffalo	NY	14207-1841	Outpatient Services	20.29%	41.03%	20.34%
5	Lackawanna	NY	14218-1435	Outpatient Services	9.45%	72.51%	11.17%
6	Lackawanna	NY	14218-1628	Outpatient Services	7.97%	79.35%	6.09%
7	Lackawanna	NY	14218-1629	Outpatient Services	7.78%	80.34%	5.44%
8	Lackawanna	NY	14218	Support	7.78%	80.34%	5.44%
9	Lackawanna	NY	14218	Support	7.78%	80.34%	5.44%
10	Lackawanna	NY	14218	Support	7.78%	80.34%	5.44%
11	Lackawanna	NY	14218	Support	7.78%	80.34%	5.44%
12	Lackawanna	NY	14218	Support	7.78%	80.34%	5.44%
13	Buffalo	NY	14220-2423	Outpatient Services	8.08%	82.29%	4.41%
14	Buffalo	NY	14215-3014	Outpatient Services	6.70%	7.71%	74.78%
15	Buffalo	NY	14213-0034	Outpatient Services	18.82%	42.81%	21.76%
16	Lackawanna	NY	14218-1629	Outpatient Services	7.78%	80.34%	5.44%
17	Lackawanna	NY	14218-2708	Inpatient	6.93%	80.52%	5.52%
18	Buffalo	NY	14216-3502	Outpatient Services	11.85%	57.16%	21.21%
19	Buffalo	NY	14207-1618	Outpatient Services	19.17%	47.34%	15.33%
20	East Aurora	NY	14052-9781	Outpatient Services	1.17%	95.09%	0.06%
21	Amherst	NY	14226	Outpatient Services	4.38%	69.33%	10.54%
22	Buffalo	NY	14203	Outpatient Services	3.78%	90.64%	2.02%
23	Buffalo	NY	14205	Outpatient Services	3.88%	88.55%	3.88%

Poverty within 1Mi of Prog.

RaceDist. within 1Mi of Prog.

Poverty within 5Mi of ...

